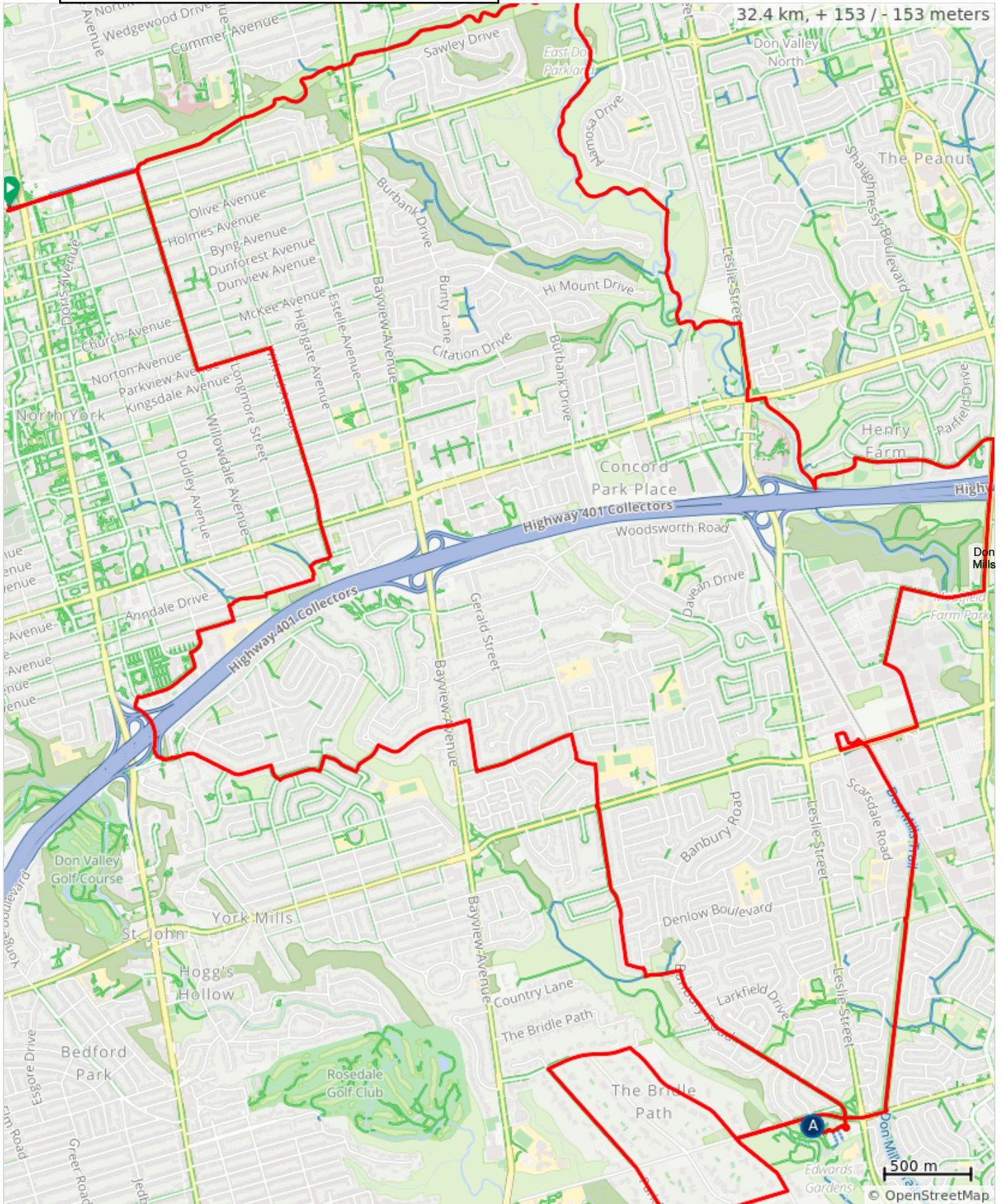


Edwards Gardens Ride 2023



A. Garden Cafe



Edwards Gardens Ride 2023

0.0	📍	Start of route	0.0
0.0	↑	START Finch Subway Passenger Pick up and Drop off	0.0
0.0	←	L on Hendon	0.1
0.1	↑	Continue on Bishop Ave	0.7
0.8	←	Left/Right on Willowdale to Trail. Regroup	2.9
3.7	→	R on Upper Don River Trail. Regroup at bottom of hill before bridge	1.9
5.6	→	R at Alamosa Park	0.8
6.5	←	L over 2 bridges	0.1
6.6	↙	Slight L at Villaways Park to go UP to Leslie. Be prepared to WALK	0.1
6.7	→	R onto Leslie St	0.5
7.2	←	L onto Sheppard Ave E	0.1
7.3	→	R on Betty Sutherland Trail	0.6
7.9	←	Detour: Regroup at the barricade fence. Then ride up the hill	0.3
8.3	→	R onto Havenbrook Blvd	0.9
9.1	→	R onto Don Mills Rd.	0.9
10.0	→	R onto Duncan Mill Rd	0.5
10.5	←	L onto Valleybrook Dr	0.4
10.9	←	L on Lesmill Rd	0.4
11.4	→	R on York Mills Rd and over the bridge	0.5
11.8	→	R into shopping centre at Scarsdale Rd	0.1
11.9	→	R toward Longos	0.1
12.0	←	L around stores	0.1
12.1	→	R on path under the bridge. (Gravel)	1.1
13.2	↑	Continue on Don Mills Trail to Lawrence. REGROUP	1.1
14.4	→	R on Lawrence Ave E	0.4
14.8	⚠️	At Blaine Dr, Across Lawrence is the 2nd entrance to Edwards Gardens. Some might like to rest and wait by the cafe until we return.	0.2
15.0	↑	Remaining riders continue over the bridge and UP the hill	0.3

15.0 kilometers. +66/-112 meters

15.3	→	R on The Bridle Path	0.8
16.1	←	L on Post Rd	0.5
16.6	←	L on Park Lane Cir	1.8
18.4	←	L on The Bridle Path	0.4
18.8	→	R on Lawrence Ave E	0.5
19.3	→	R into Gardens LUNCH and Washrooms	0.1
19.4	←	L following pathway past gardens and main building	0.1
19.5	→	R around circle .	0.1
19.6	→	Cross Lawrence to Banbury	1.4
20.9	←	L on trail through Windfields Park	0.2
21.1	→	R on trail toward Penwood Crescent then L on Penwood	0.3
21.5	↑	Continue onto Sandfield Rd	0.8
22.2	↑	Cross York Mills Rd to trail beside school	0.3
22.5	←	L to continue onto Colvestone Rd	0.1
22.6	→	R onto Harrison Rd	0.1
22.8	←	L onto Heathcote Ave	0.6
23.3	→	R onto Berkindale Dr	0.3
23.6	←	L onto Fife Rd	0.1
23.8	↑	Cross Bayview and continue on Fifeshire	0.5
24.2	←	L onto Knollwood St	0.2
24.4	→	R onto Medalist Rd	0.2
24.6	←	L onto Balding Ct	0.1
24.7	→	R onto Fenn Ave	0.2
25.0	→	R on Upper Highland Cres	0.1
25.1	←	L onto Lord Seaton Rd	0.6
25.7	→	Slight R to sidewalk and pathway to cross highway ramp. CAREFUL!	0.4
26.1	→	R on SECRET path after going under bridge	0.1
26.2	→	R on Harrison Garden Blvd	0.5
26.6	→	R on Oakburn Crescent	0.2
26.8	→	R on Avondale Ave	0.2
27.0	←	L on Dudley Ave	0.1

12.0 kilometers. +68/-41 meters

27.1	➔	R on Glendora Ave and onto pathway	0.2
27.3	➡	Left/Right to continue on Glendora	0.3
27.6	➡	Step over the curb. Turn L to go north	0.1
27.7	➔	First R toward Wilfred Ave	0.1
27.8	➡	L onto Wilfred Ave	0.2
28.0	⬆	Cross Sheppard	1.1
29.1	➡	L onto Parkview Ave	0.4
29.5	➔	R onto Willowdale Ave	1.2
30.7	➡	L on Bishop Ave to Hendon	1.5
32.2	⬆	Cross Yonge to Hendon	0.1
32.3	➔	R into Finch Subway "Passenger Pick up and Drop Off" END	0.1
32.4	📍	End of route	0.0

5.4 kilometers. +14/-0 meters